

Body, front

Lock carrier with attachments, removing and installing

1 - Hex bolt (6x)

◆ 45 Nm (33 ft lb)

2 - Hex bolt

◆ 45 Nm (33 ft lb)

3 - Hex bolt (4x)

◆ 10 Nm (7 ft lb)

4 - Hex bolts (2x)

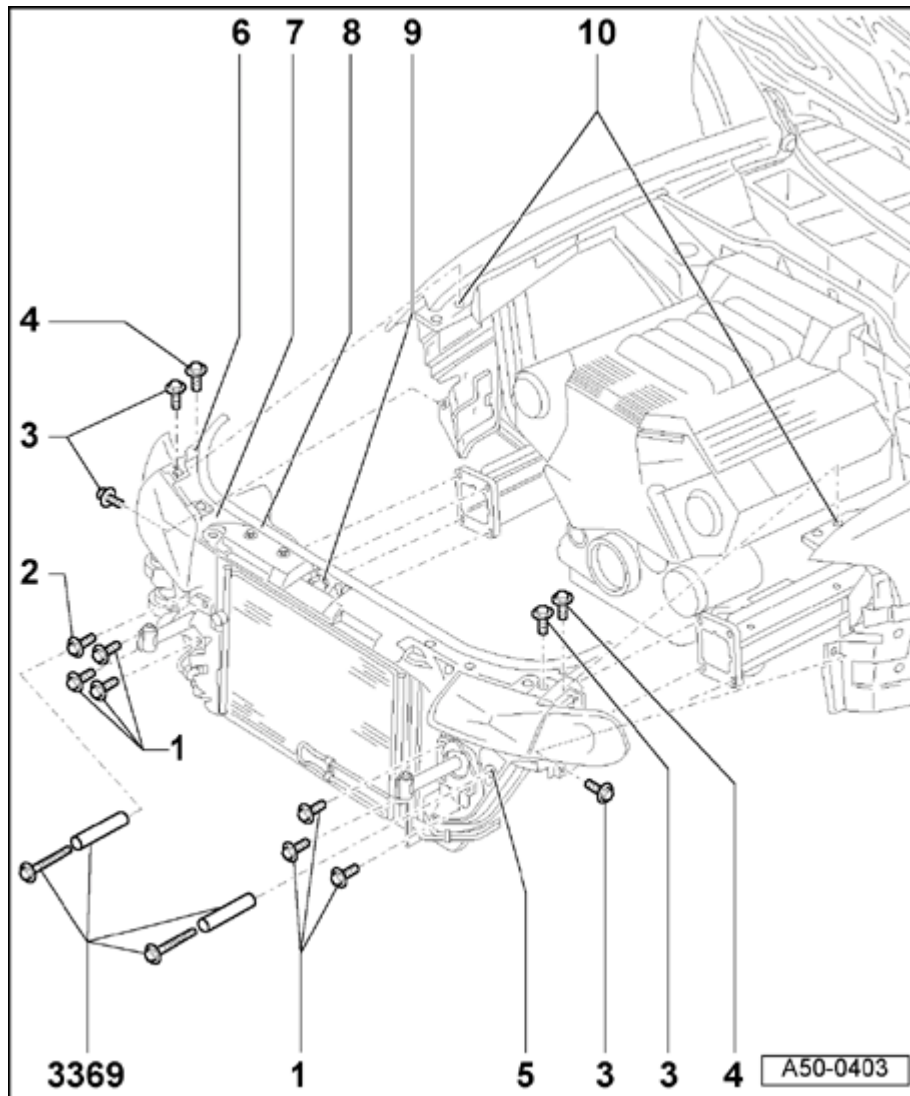
◆ 10 Nm (7 ft lb)

5 - Access hole for special tool

◆ For service position, attach special tool 3369 here

6 - Cowl attachment hole

◆ Attachment for service position



7 - Lock carrier

Removing:

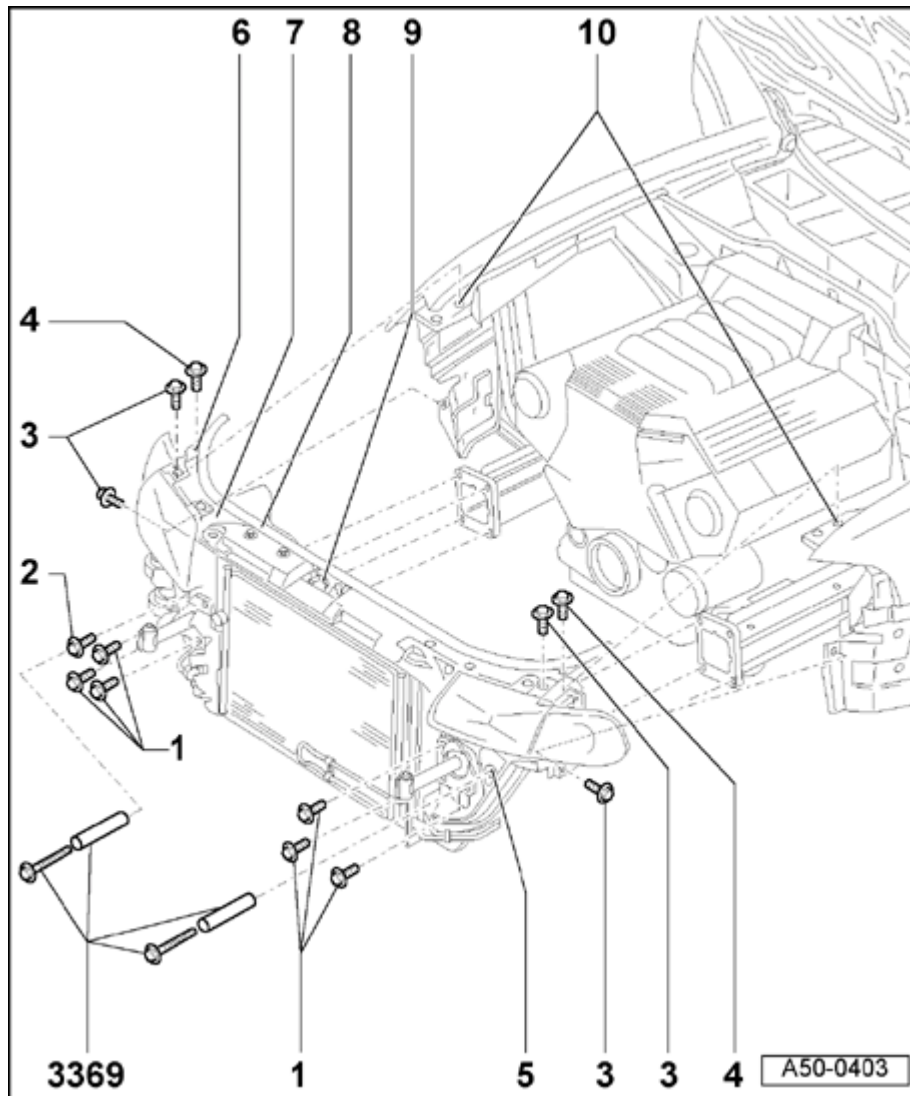
- Remove bumper ⇒ [page 63-1](#) .
- Remove noise insulation panel ⇒ [page 50-18](#) .
- Disconnect hood lock cable ⇒ [page 55-10](#) .
- Drain engine coolant and disconnect coolant hoses ⇒ [Fig. 2](#) .
- Disconnect condenser from lock carrier only (do not disconnect any lines) and secure with wire (e.g. at front wheel).

⇒ [Repair Manual, Heating & Air Conditioning, Repair Group 87](#)

Notes:

- ◆ Do not suspend condenser by its lines.
- ◆ Condenser lines must not be bent or kinked under any circumstances.
- Remove hydraulic oil cooler only (do not disconnect lines) ⇒ [Fig. 1](#) .

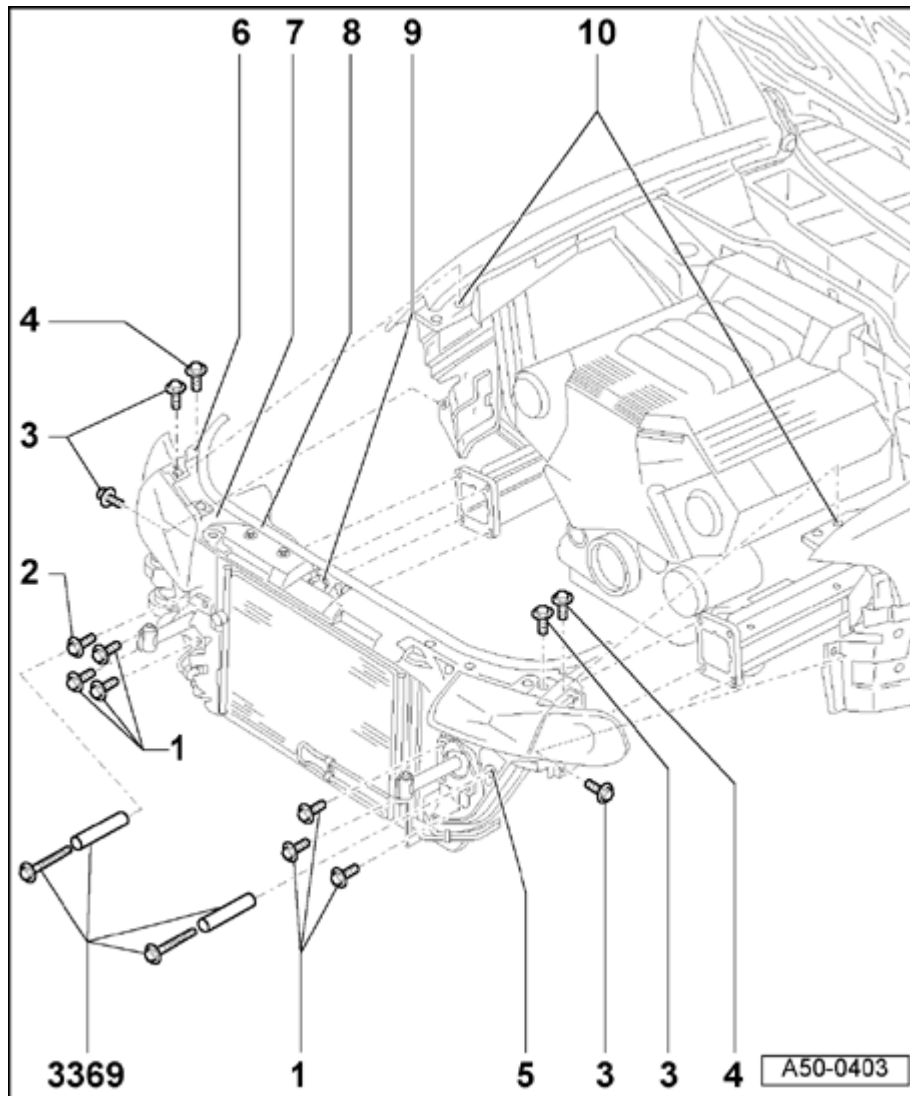
⇒ [Repair Manual, Suspension, Wheels, Steering, Repair Group 48](#)

**Notes:**

- ◆ Do not suspend hydraulic fluid cooler by its lines.
- ◆ Hydraulic fluid cooler must not be bent or kinked under any circumstances
- ◆ On vehicles with automatic transmission, remove ATF cooler

⇒ *Repair Manual, Automatic Transmission, Repair Group 37*

- ◆ On vehicles with charge air cooler, remove intake air duct
 - Loosen seal for hood -8- at left and right where fender meets lock carrier -7-.
 - Remove bolts -3- and -4-.
- A second mechanic is needed to support lock carrier -7-
 - Remove bolts -1- and -2-.



Installing:

- Install in reverse order of removal.
- Adjust headlights.

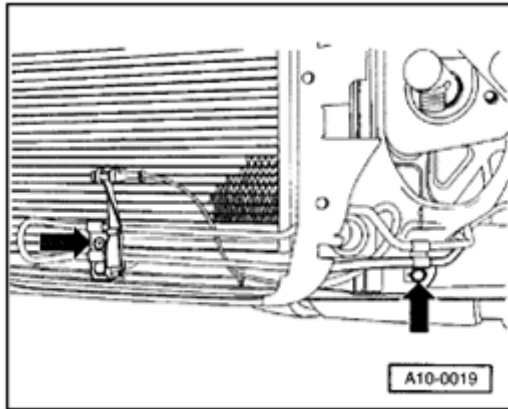
Adjusting:

- Center lock carrier -7- between fenders.
- If fenders and hood are also being replaced, center them in relation to one another before adjusting lock carrier.

8 - Hood seal**9 - Hood lock cable**

◆ Disconnecting ⇒ [page 55-10](#)

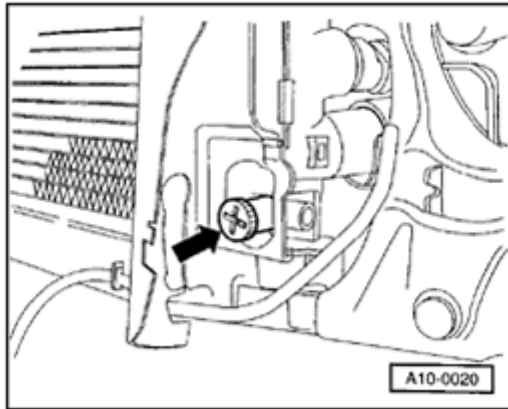
10 - Hole in side panel



A

Fig. 1 Disconnecting hydraulic fluid cooler

- Remove screws for cooling line (for power steering) at engine support and transmission.

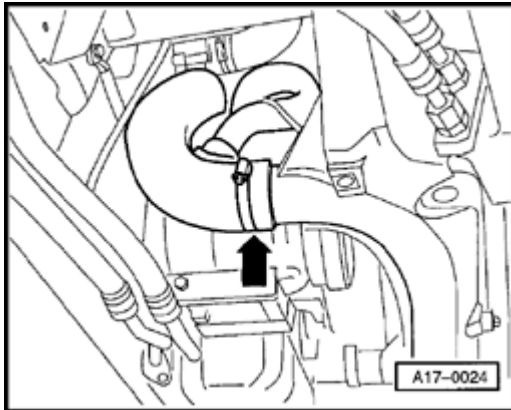


A

Fig. 2 Disconnecting coolant hose

- Drain coolant from radiator.
- Pull out locking element for coolant line connecting flange at bottom of radiator and remove connecting flange.
- Bleed coolant system.

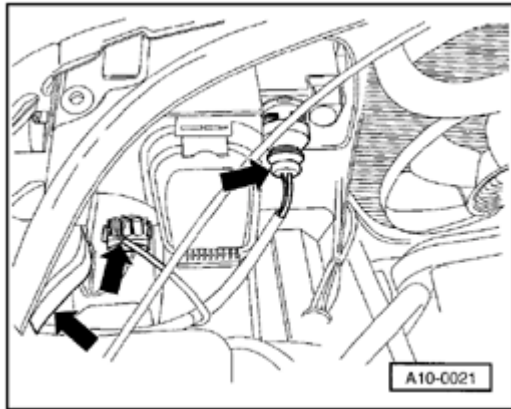
⇒ *Repair Manual, General, Engine, Repair Group 19*



A

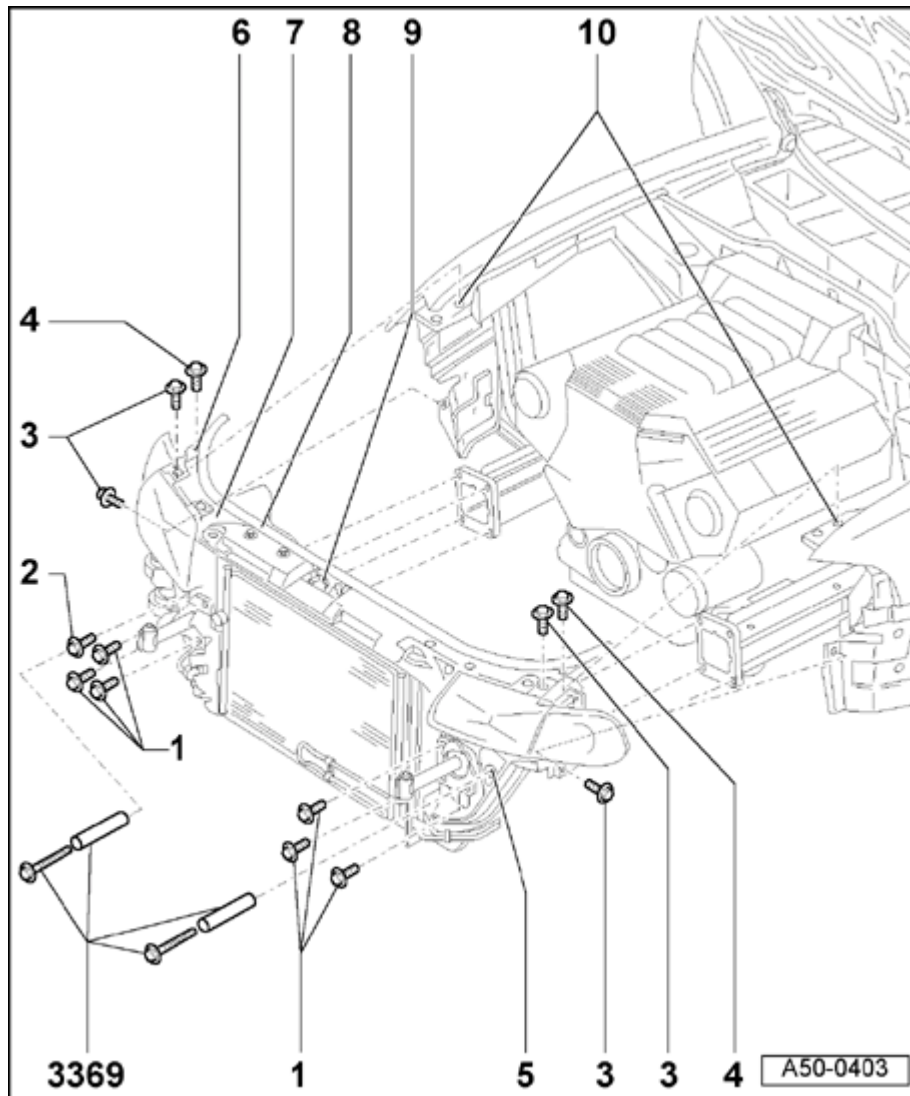
Fig. 3 Disconnect hose for charge air cooler

- On vehicles with charge air cooler, loosen bolt on hose clamp (arrow).
- Remove hose.
- Unscrew air duct to air cleaner at cowl and lift out.



A

- Disconnect harness connectors for headlights, headlight height adjustment and blinkers.
- Disconnect harness connector for coolant system temperature sensor for coolant fan at lower coolant hose area at radiator (left).



Lock carrier service position

Notes:

◆ Do not remove noise insulation. Loosen only front quick-release screws ⇒ [page 50-18](#) .

◆ Bumper removed

1 - Combination bolt

◆ 45 Nm (33 ft lb)

2 - Combination bolt

◆ 45 Nm (33 ft lb)

3 - Combination bolt

◆ 10 Nm (7 ft lb)

4 - Combination bolt

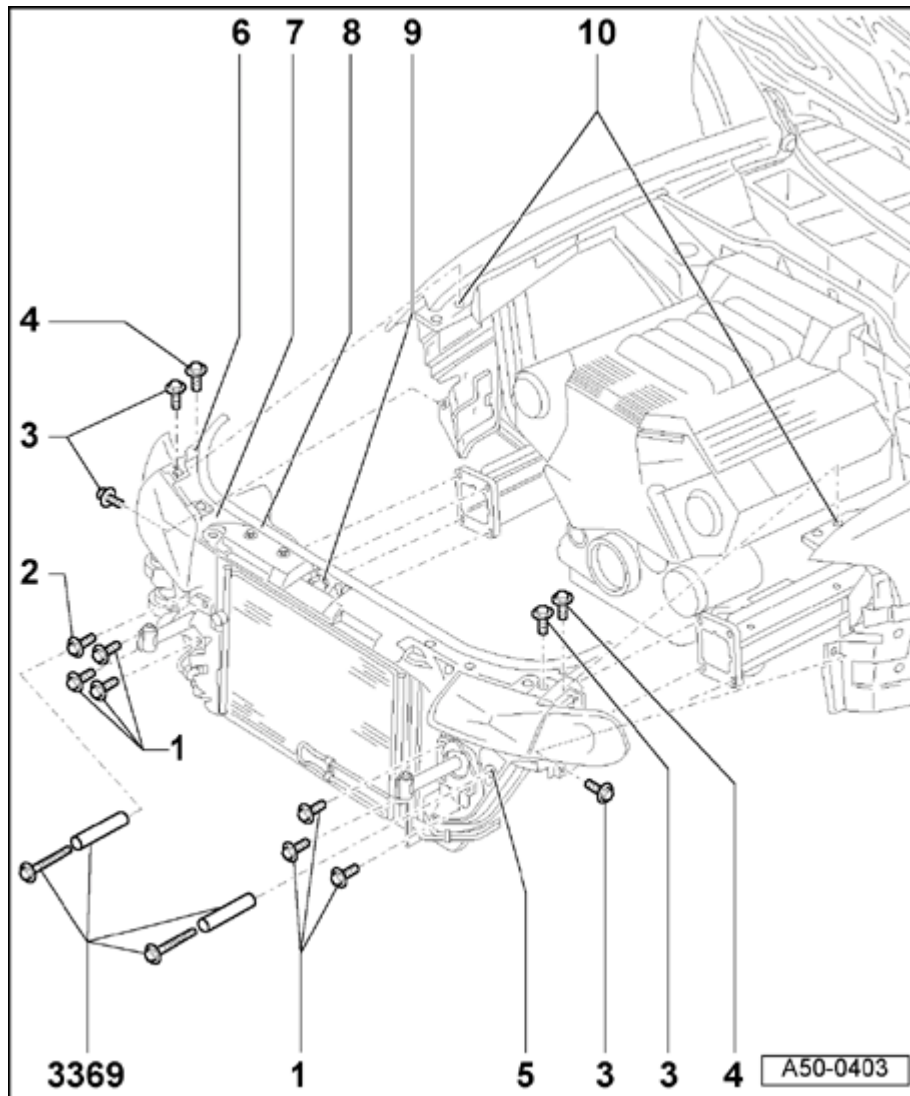
◆ 10 Nm (7 ft lb)

5 - Access hole for special tool

◆ For service position, attach special tool 3369 here

6 - Cowl attachment hole

◆ Attachment for service position



7 - Lock carrier

◆ For service position

- Screw special tool 3369 into threaded bore -5- on left side ⇒ [Fig. 1](#)
- Remove left and right mounting screws -1-.
- Remove mounting bolts -3- and -4- and pull lock carrier -7- forward.
- Secure lock carrier ⇒ [Fig. 2](#).

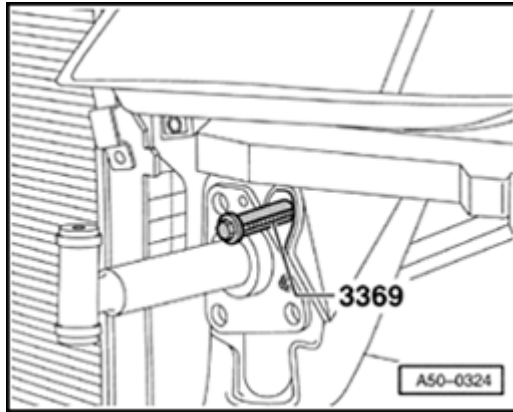
8 - Hood seal

9 - Hood lock cable

10 - Hole in side panel

Note:

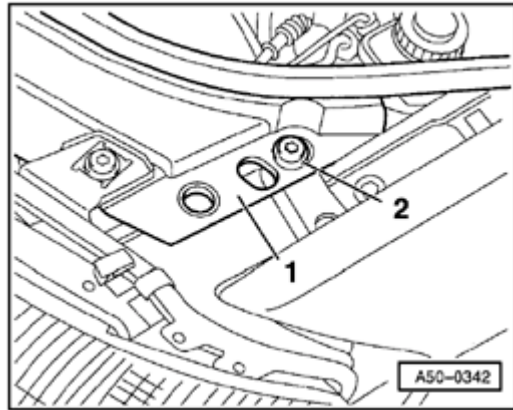
After assembly of the lock carrier, check headlight positioning and adjust if necessary.



A

Fig. 1 Screw in special tool 3369

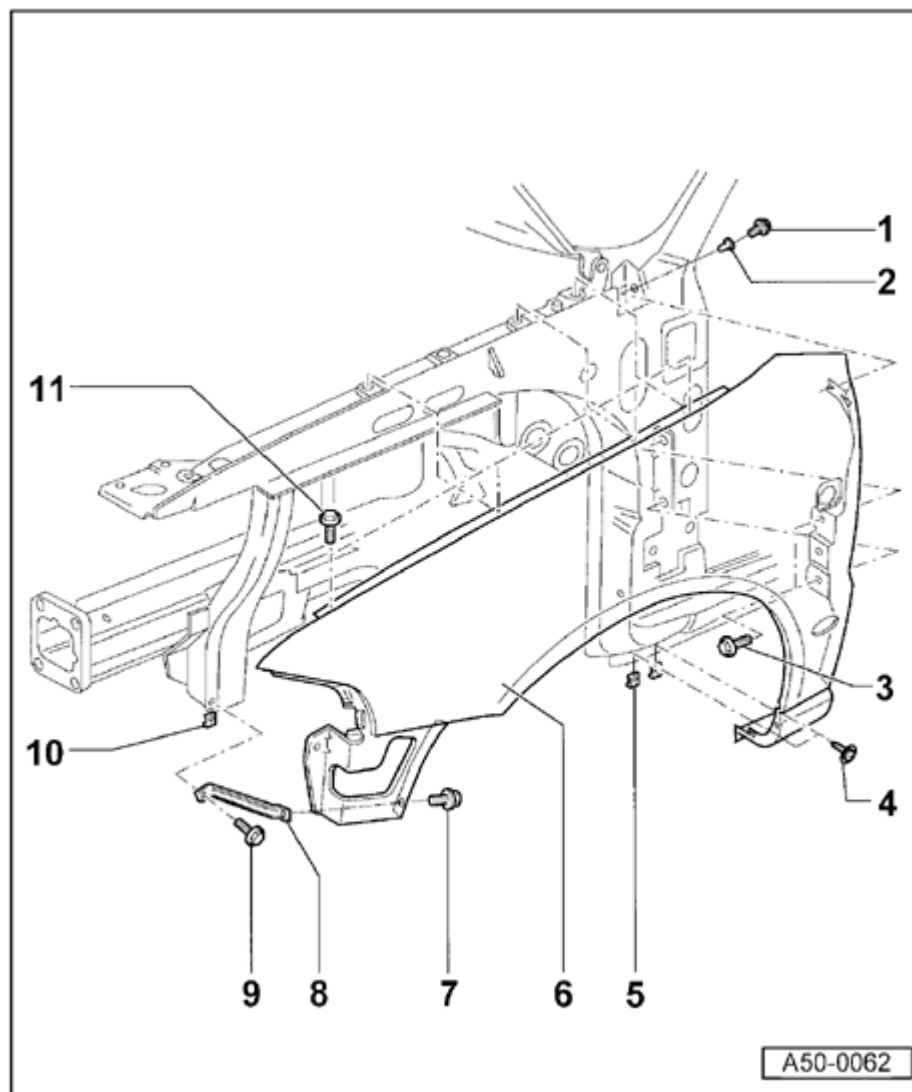
- Screw special tool 3369 in at left and right as shown.
- Pull lock carrier forward until rear hole in lock carrier aligns with front threaded hole in fender flange.



A

Fig. 2 Secure lock carrier

- Secure lock carrier with screws at left and right as shown.



Front fender (➤ VIN 8D XA 200 000), assembly overview

1 - Combination bolt

- ◆ 4.5 Nm (40 in. lb)

2 - Threaded rivet

- ◆ Threaded rivet is inserted using VAG1618A

3 - Combination bolts (2x)

- ◆ 7.5 Nm (66 in. lb)

4 - Phillips head screw

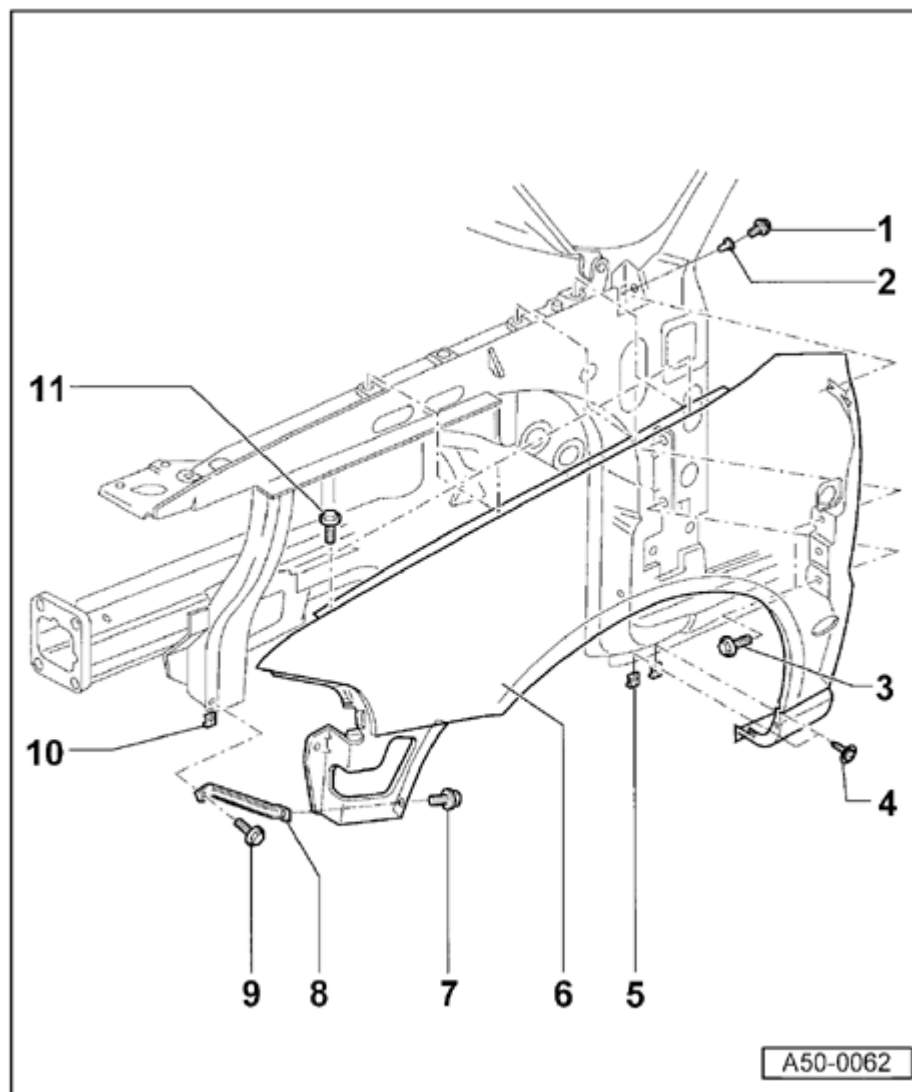
- ◆ 4.5 Nm (40 in. lb)

5 - Metal nut (2x)

6 - Fender

- ◆ Remove bumper ⇒ [page 63-1](#) .
- ◆ Remove wheelhousing liner ⇒ [page 66-31](#) .
- ◆ Remove end plate ⇒ [Fig. 1](#) .
- ◆ Remove headlights ⇒ Repair Manual, Electrical Equipment
- ◆ Disconnect electrical connectors for side blinkers
 - Remove bolts -1-, -3-, -4-, -7-, and -11-.

50-11

**7 - Combination bolt**

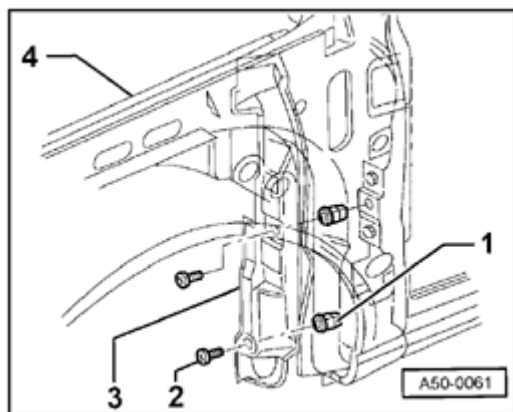
◆ 7.5 Nm (66 in. lb)

8 - Bracket**9 - Combination bolt**

◆ 7.5 Nm (66 in. lb)

10 - Metal nut**11 - Combination bolt**

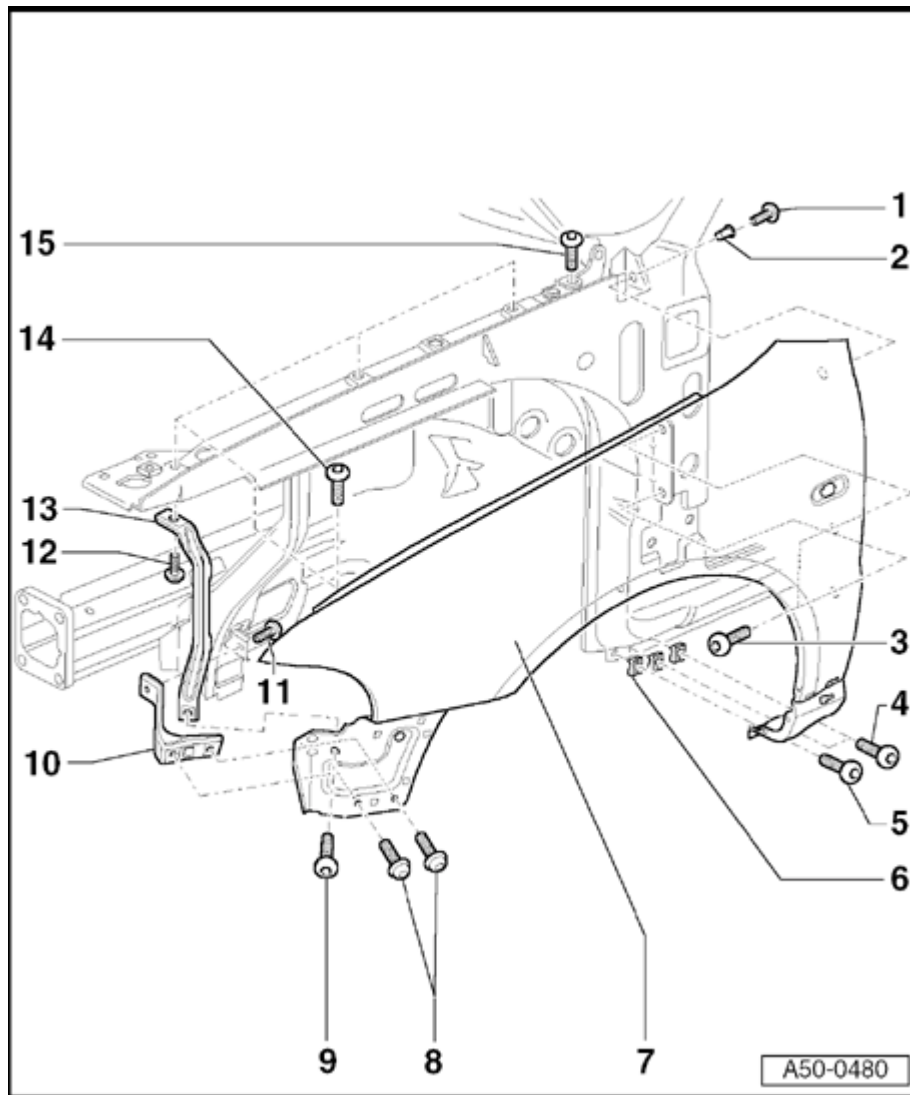
◆ 7.5 Nm (66 in. lb)



A

Fig. 1 Removing and installing end plate

- Remove front wheel.
- Remove wheelhousing liner ⇒ [page 66-31](#) .
- Remove bolt -2- (2x).
Tightening torque: 2.5 Nm (22 in. lb)
- Remove endplate -3- from fender -4-.
- 1 - Expanding clip (2x)



Front fender (VIN 8D XA 200 001 ➤ and S4), assembly overview

1 - Combination bolt

◆ 4.5 Nm

2 - Threaded rivet

◆ The threaded rivet is inserted with VAG 1618 A.

3 - Combination bolts (2x)

◆ 7.5 Nm

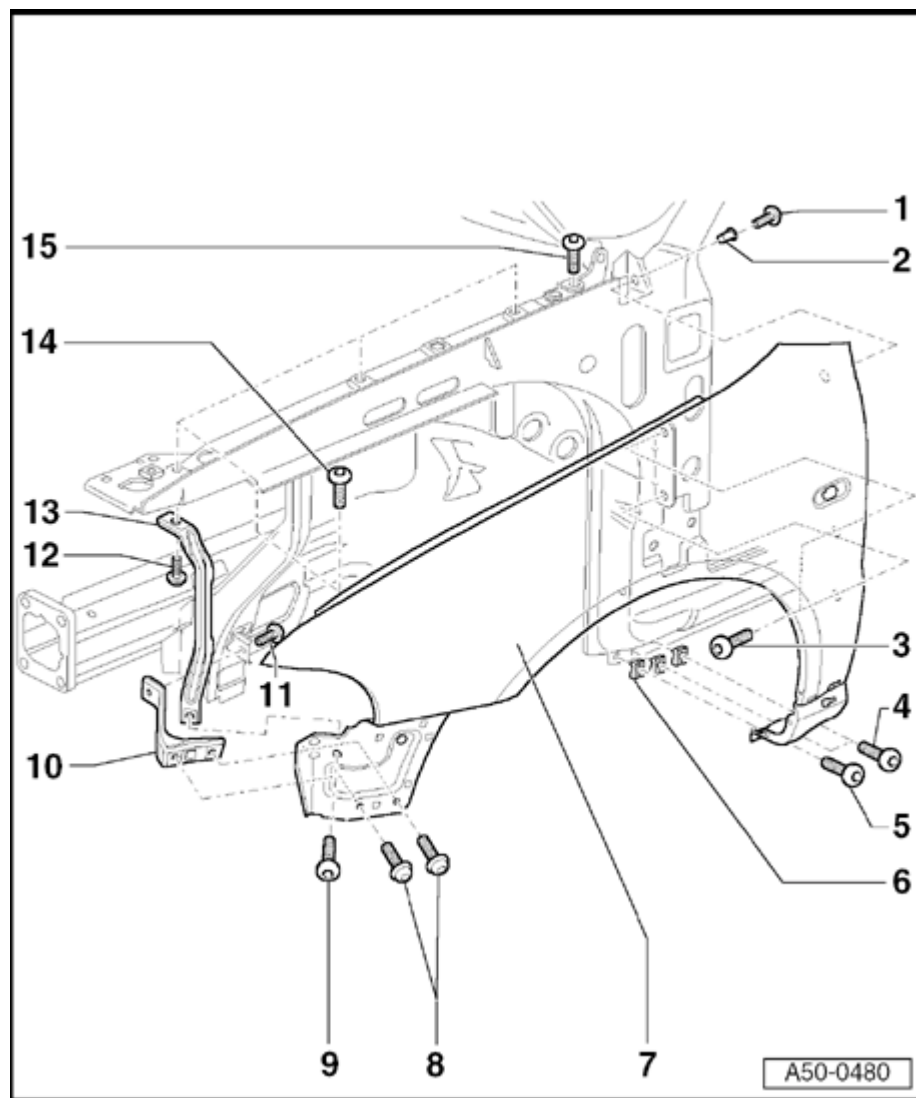
4 - Phillips-head screw

◆ 4.5 Nm

5 - Phillips-head screw

◆ Only installed for S4.

◆ 4.5 Nm



6 - Snap-on nut

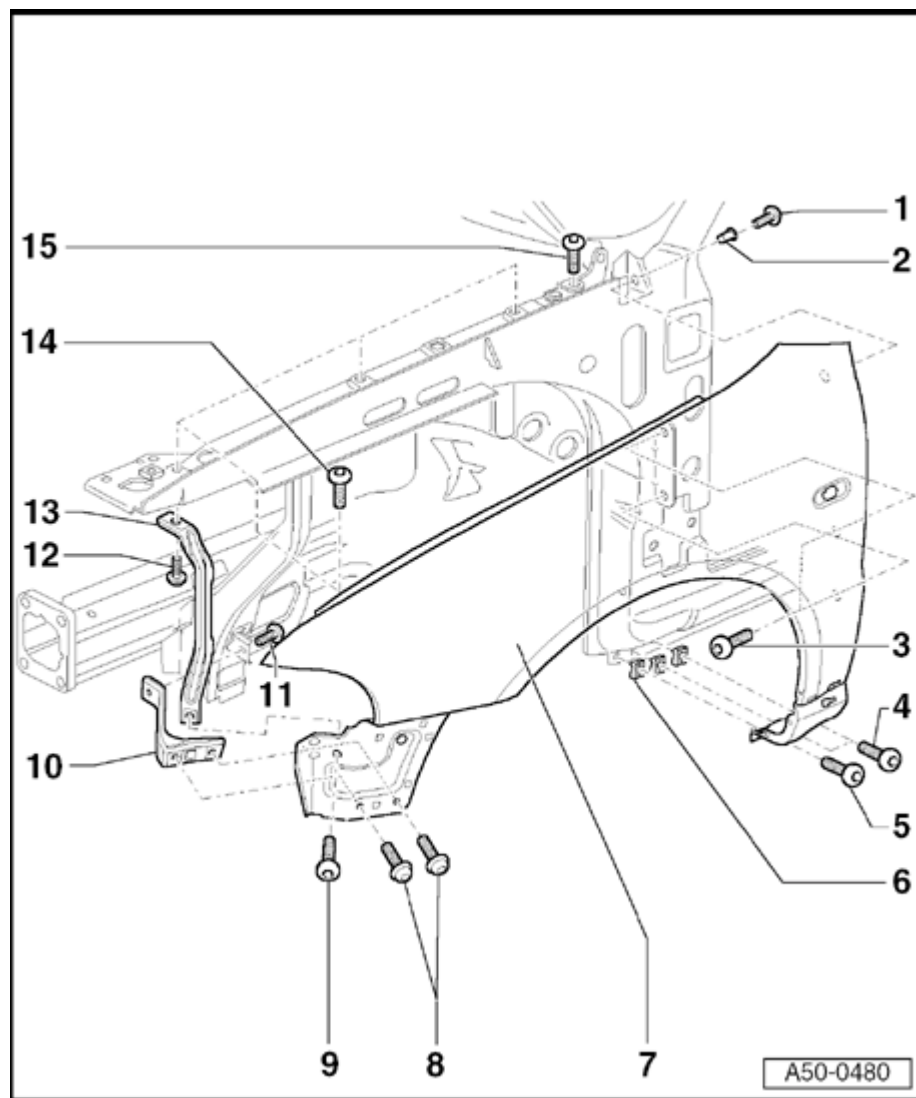
- ◆ Only installed for S4.

7 - Fender

- ◆ Drill additional hole at bottom for S4 fender
⇒ [Fig. 2](#) .
- ◆ Removing:
 - Remove bumper ⇒ [page 63-5](#) .
 - Remove wheelhousing liner ⇒ [page 66-31](#) .
 - Remove headlights

⇒ [Repair Manual, Electrical Equipment, Repair Group 94, headlights, headlights, removing and installing.](#)

- Disconnect harness connector for side turn-signal.
- Remove end plate ⇒ [Fig. 1](#) .
- Remove bolts -1-; -3-; -4- (bolt -5- only for S4) -8-; -9- and -14-.



8 - Metal bolt

◆ 7.5 Nm

9 - Metal bolt

◆ 7.5 Nm

10 - Bracket

11 - Metal bolt

◆ 7.5 Nm

12 - Metal bolt

◆ 7.5 Nm

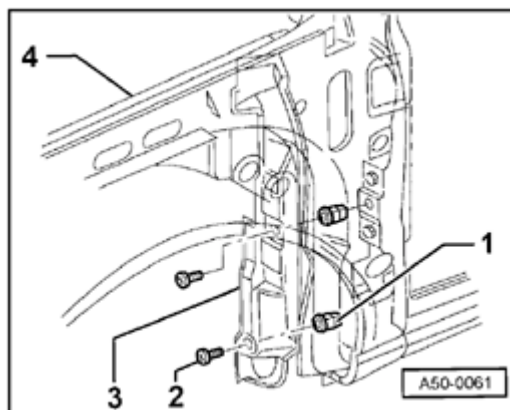
13 - Bracket

14 - Combination bolt

◆ 10 Nm

15 - Combination bolt

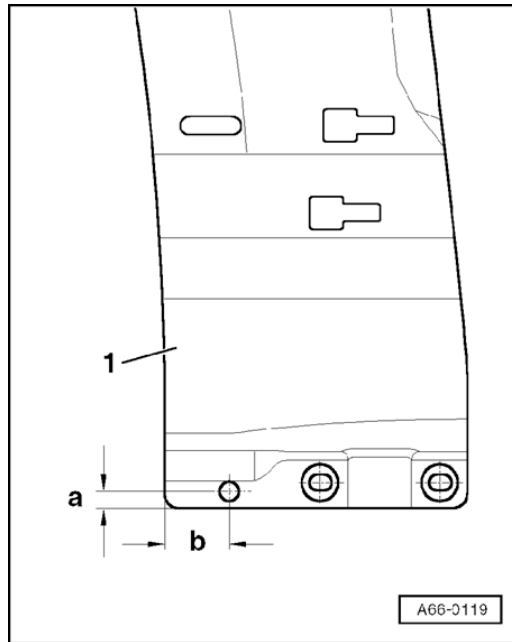
◆ 7.5 Nm



A

Fig. 1 Removing and installing end plate

- Remove front wheel.
- Remove wheelhousing liner ⇒ [page 66-31](#) .
- Remove bolt -2- (2x).
Tightening torque: 2.5 Nm
- Remove end plate -3- from fender -4-.
- Expanding clip -1- (2x).

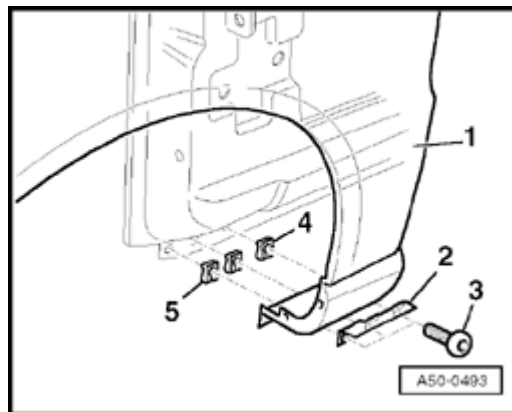


A **Fig. 2 Drilling hole for S4 fender**

Note:

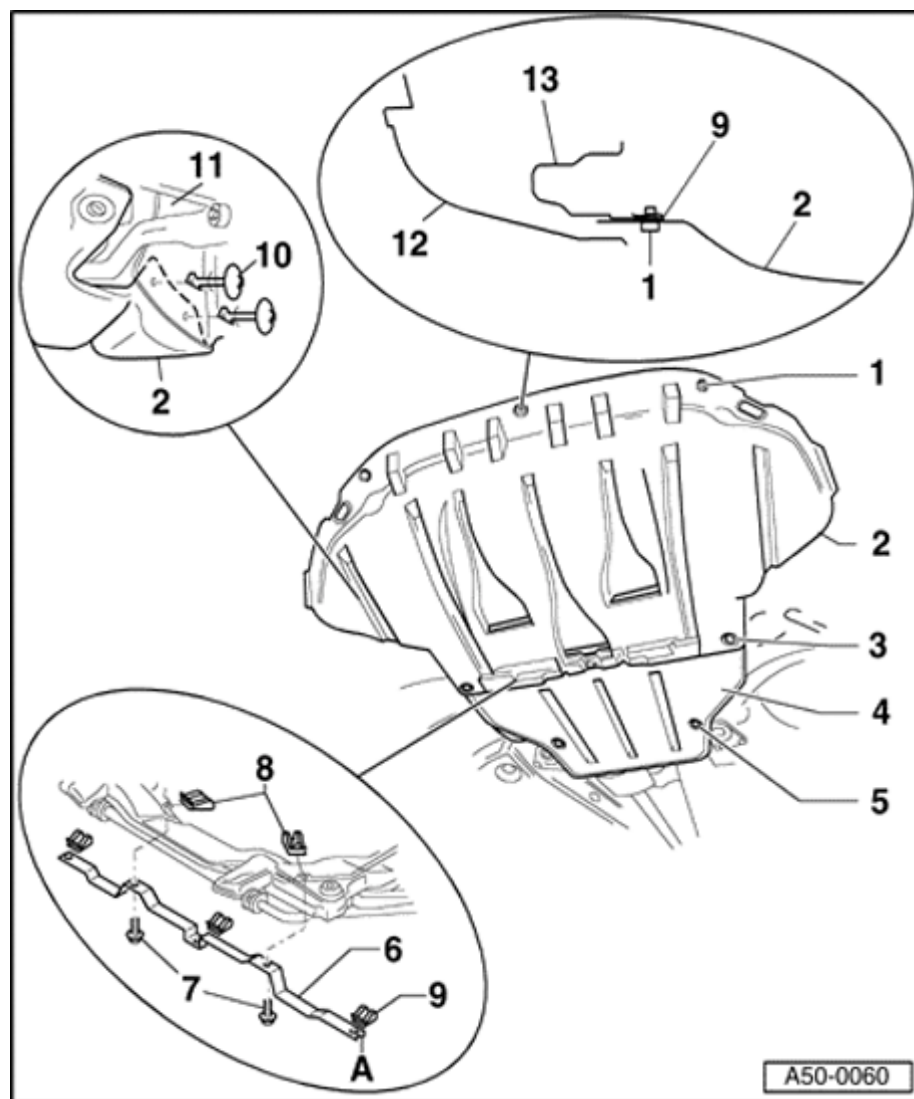
For part replacement, drill hole before painting.

- Drill 7 mm diameter hole in fender. Dimension -a- = 22mm and -b- = 8mm.
- Restore corrosion protection at edges of hole.



A **Fig. 3 Lower fender mount (S4)**

- Slide speed nuts -4- onto door sill from bottom.
- Speed nuts -5- only for S4
- Secure fender -1- at bottom using reinforcing bracket -2- and bolts -3-.



Noise insulation panel, assembly overview

1 - Quick-release screw

- ◆ Remove only this quick release screw for service position
- ◆ Three pieces
- ◆ 2 Nm (18 in. lb)

2 - Front noise insulation

3 - Quick release screw

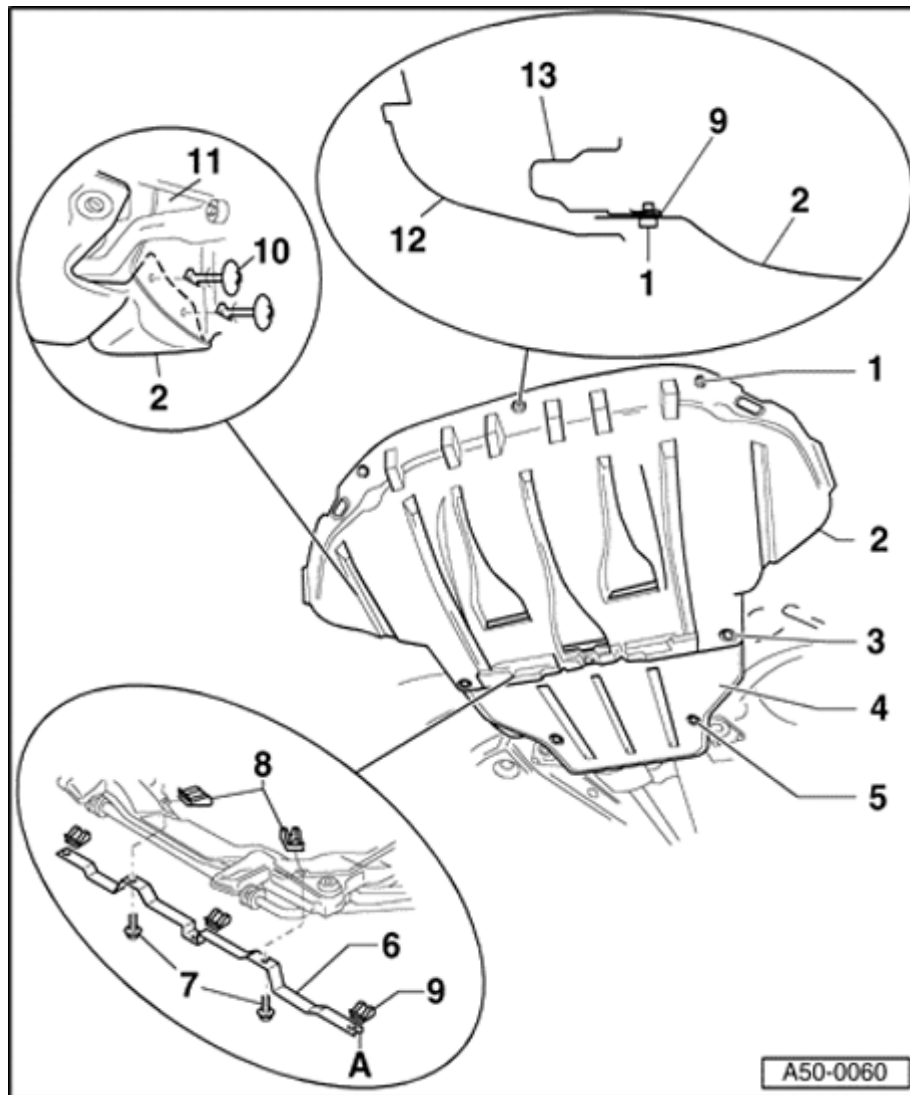
- ◆ Three pieces
- ◆ If rear noise insulation panel is also - 4 - being installed, then longer quick-release screws must be used
- ◆ 2 Nm (18 in. lb)

4 - Rear noise insulation panel

- ◆ Only installed for certain engine types
- ◆ Installed over noise insulation panel -2-

5 - Quick-release screw

- ◆ Two pieces
- ◆ 2 Nm (18 in. lb)

**6 - Mounting for noise insulation panel**

- ◆ Position -9- must face left side of vehicle

7 - Bolt

- ◆ Two pieces
- ◆ 7.5 Nm (66 in. lb)

8 - Plate nut

- ◆ Two pieces

9 - Plate nut

- ◆ Three pieces

10 - Clamping pin

- ◆ Two pieces

11 - Wheelhousing liner**12 - Bumper****13 - Lock carrier with attachments**